

VIVIX Software



VXVUE



PureImpact™

QXLink 3.3



DICOMesh

MEDLINK
IMAGING

a viewworks company

www.medlinkimaging.com

SOFTWARE

Vieworks pursues an “all-in-house design” that offers both hardware and software solutions.

VXVUE

Digital Radiography Acquisition viewer for VIVIX-S Series

- Easy Workflow
- User Friendly
- Various Apps

PureImpact™

Advanced X-ray image processing algorithm

- Excellent Image Quality
- Simple Management
- Separated SDK

QXLink 3.3

Streamlined PACS

- Optimized PACS
- 4 Different Apps (Human, Vet, Chiro, Orthopedic)
- Std. DICOM Print/Storage

DICOMesh

Cloud based Dicom-centric archiving and recovery platform

- Easy-To-Use
- Encrypted Transfer
- Automated Backup

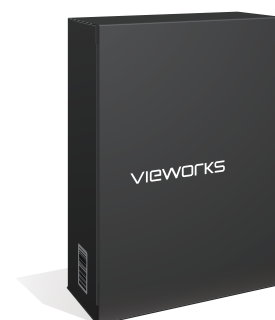


VXvue

VXvue with PureImpact™

Digital Radiography Acquisition Viewer for VIVIX-S Series

VXvue is an image acquisition program cooperating with VIVIX-S series. New post-processing algorithm, PureImpact™, provides clear images for efficient diagnosis. With various functions and tools, VXvue maximizes work efficiency in different medical environments.



Main Features

Easy Management

- Main integration systems: Generator, U-arm, collimator, DAP, etc.
- DICOM 3.0 : MWL, Send, Print, MPPS, etc.
- Simple registration with preset auto retrieve
- Exporting the images to external USB/Hard disc

Advanced Image Processing – PureImpact™

- New post-processing algorithm for an efficient diagnosis
- Fine details without visual artifact, soft tissue delineation, non-grid chest processing, stable imaging processing within standard radiation dose variation, grid line removal with clear resolution, fine tuning(bright region suppression), wide latitude
- Providing 3 different mode(Soft, Normal, Hard) for individual preference
- Optimized pre-set parameters for each target examination (human, vet, and equine)

Convenient Usability

- Automated functions including auto-cropping, auto-labeling, and auto-sending
- Touch screen interface
- Customizable UI(font, color, style)
- Statistic function with dose and exam management



Exposure Mode (Human)

Exposure Mode (Veterinary)

Measurement (Free rotation)

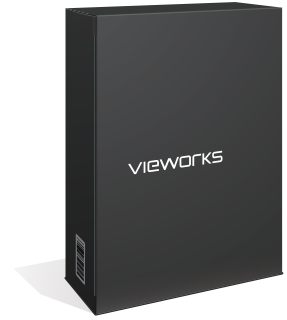
Installation System Requirements

Monitor Resolution (w x h)	1280 X 768
CPU	Intel Core i5 2600
Memory	4GB
Operating System	Microsoft Windows 8 / 8.1 Pro (64 bit) Microsoft Windows 10 Pro (64 bit)

QXLink 3.3

Streamlined PACS

QXLink 3.3 is a picture archiving system that stores all digital information from diagnostic imaging apparatus. Various measurement tools assist convenient diagnosis. Users can customize its layout easily with multi-monitor configuration.



Main Features

Web-based Access

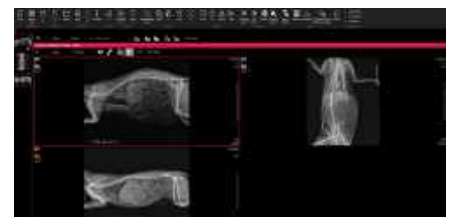
- Easy management: convenient and unlimited viewer installation with concurrent license
- Easy configuration: convenient configuration with Built-in web server
- Fast delivery: Background and JIT(Just in Time) loading

Multi-monitor Configuration

- Hanging protocol: View with protocol (1-1, 1-1-1, 2-1, etc.) up to 4 monitors and custom view is also available.
- Various screen resolution: VGA to UHD without custom scaling

Advanced Tools with Guide

- More than 60 measurements tools including Chiropractic, Orthopedic, Veterinary
- Useful guide for each tools make it easy to use, minimizing misdiagnosis
- Printing with drag & drop in custom layout is available.
- Full size page for stitched image is available.



Installation System Requirements

Monitor Resolution (w x h)	640 x 480
CPU	Intel Core i5 2600
Memory	2GB
Operating System	Microsoft Windows 8 / 8.1 Pro (32 bit / 64 bit) Microsoft Windows 10 Pro (64 bit)

DICOMesh Cloud Back-up System

Synchronized Cloud based archiving and recovery system

Our cloud based Dicom-centric archiving platform provides the ideal solution for your HIPAA & HITECH compliant back-up and recovery needs.

DICOMesh gives the user the freedom in knowing that their back-up system not only provides automated back-up functionality but that their sensitive data is protected using the latest in HIPAA and HITECH compliant data encryption technology.

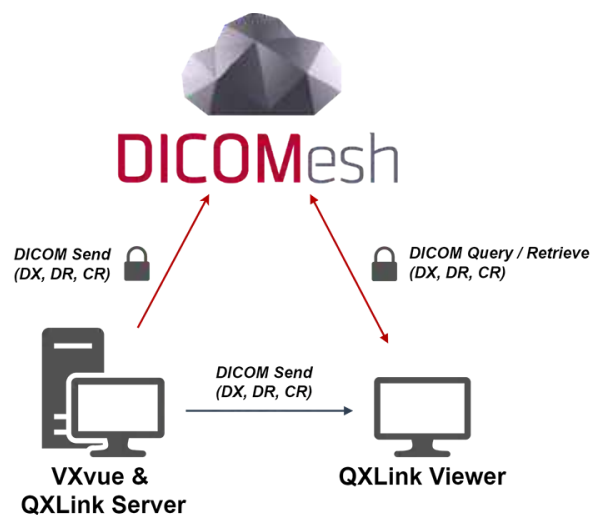


Main Features

- Synchronize your local backup to the cloud
- Able to Query/Retrieve any past uploaded study if local copy is lost
- HIPAA & HITECH compliant solution
- Scalable Storage through structured tiers: 250GB, 500GB, 1TB
- Perfect DICOM cloud archive
- Finished studies are saved locally to any provided HDD/NAS/Mapped Drive
- Local backups save DICOM & JPEG versions on study completion

Full Intergration with Vivix Workstations

- Able to Send X-rays (CR, DR, DX) to DICOMesh from VXvue Acquisition Software
- Query/Retrieve lost studies from DICOMesh using QXLink
- Studies are sent to DICOMesh automatically on study close
- Annotated and measured in QXLINK? Just send the updated study to DICOMesh



Installation System Requirements

CPU	1.3 GHz processor minimum
Memory	4GB of free RAM minimum
Storage	3GB free hard drive available space on OS drive
Browser	Internet Explorer 11 or higher
Internet Connection	TCP/IP Network

MEDLINK IMAGING

a **vieworks** company

1 Chapin Rd, Unit 3, Pine Brook, NJ 07845
800-456-7800
sales@medlinkimaging.com
www.medlinkimaging.com