



Phone: 678.987.8579

Fax: 678.545.1182

Email: customerservice@afpmfg.com

www.AFPmanufacturing.com

**Accessories**

- 9992305003 No plumbing conversion kit
- 9992302608 User parts kit
- 9995100004 Base stand
- 9992305005 Replenisher tank set (7 gallon)

**AFP Processor Specifications**

**Category** MINI-MED 90™  
MINI-MED EP™  
MINI-NDT™

**Dimensions**

Length 33 in. (83.8cm) / 21 in. (53.3cm) base  
Width 22 in. (55.9cm) / 21 in. (53.3cm)  
Height 24.5 in. (62.2cm) / 21 in. (53.3cm)  
Height of base is 29 in. (74cm)

**Weight**

Net 100 lb (45.5 kg)  
w/solutions 150 lb (68.2kg)

**Materials accommodated**

Film sizes (minimum) 4 x 4 in. (10 x 10cm)  
(maximum) 14 x 36 in. (36 x 92cm)

Film types Standard X-ray film suitable for  
90 sec. processing (RP) (only for Mini-Med 90)

Chemistry types Chemistry suitable for rapid processing (RP)

Tank capacities 1.9 gal. (7.2 liters) (each tank)

Power requirements 115 V, 60 Hz, 1PH, 15 Amp  
220 V, 50 Hz, 1PH, 7.5 Amp  
220 V, 60 Hz, 1PH, 7.5 Amp

Water consumption 1/4 gal/min (.9 liters/min)\*  
\*No water consumption during "standby mode"

Drain Requirement 2 gal/min (7.6 liters/min)

	Mini-Med 90	Mini-Med EP	Mini-NDT
<b>Processing Speed</b> (in seconds) (14" x 17") [36 x 43cm]			
Developer Immersion Time	21	44	120
Processing Time (Leading Edge to Leading Edge)	90	180	8 min
Processing Time (Dry to Drop)	120	240	8.5 min
<b>Production Capacity</b>			
(14" x 17" / 36 x 43cm films per hour)	90	45	11
(Mixed film sizes per hour)	210	105	26

The AFP Mini-Med family of processors have an optional "No Plumbing" kit available for installation in "Mobile Vans" or locations where plumbing is not available.

	110V/60	220V/50	220V/60
MINI-MED 90™ (90 Second Version)	9992305300	9992305500	9992305400
MINI-MED EP™ (180 Second Version)	9992305600	9992305800	9992305700
MINI-NDT™	9992501600	9992501700	9992501900

AFP Manufacturing Corporation  
685 Dividend Drive, Suite 250  
Peachtree City, GA 30269

AFP Dealer

AFP MINI-MED

# MINI-MED™

The Most Popular Compact X-Ray  
Film Processor in the World



Quality • Dependability • Service

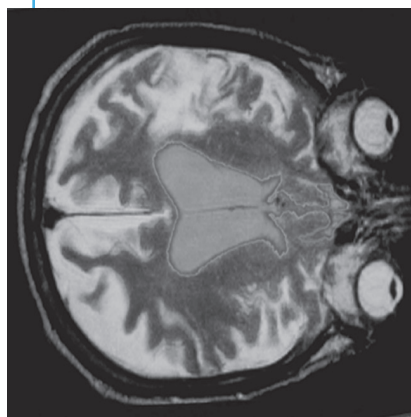
”The Mini-Med 90 is the perfect choice for small offices, clinics, satellite health care facilities and mobile installations.“

# AFP Mini-Med™

## Mini-Med: Maxi-Savings

### Mini-Med... The most popular compact x-ray film processor in the world

When the AFP Mini-Med film processor was first introduced, it quickly became one of the all time best sellers to hospitals, radiology labs and private practices alike. Compact, reliable and easy to use, the Mini-Med has everything you'll ever want and need in one stand-alone package.

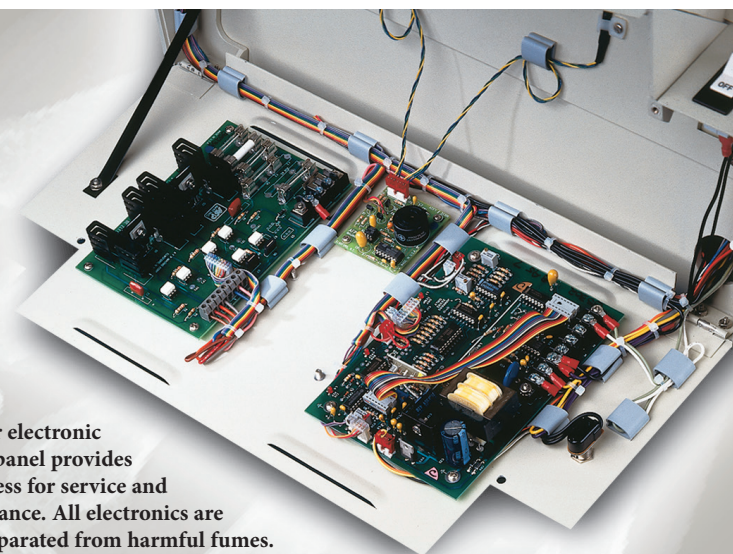


### High Diagnostic Quality, Low Maintenance

World renowned for dependability, the Mini-Med delivers the highest quality x-ray images, week after week, year after year. Fully automatic and fully warrantied, you get the best of both worlds: outstanding film processing quality and years of trouble-free operation.

### Mini-Med: Maxi-Savings

Why has the Mini-Med remained so popular over the years? The reason is simple: it's simple. Simple...as in easy to use. Simply functional. Simply reliable. All those simples add up to another big 'S' word: Savings. The Mini-Med has been designed with many of the time, space and money-saving features usually found only in higher priced models.



Modular electronic control panel provides easy access for service and maintenance. All electronics are safely separated from harmful fumes.

### Fast, Versatile... Loaded with Features

The Mini-Med 90 is a 90-second workhorse that pays for itself with smooth, steady efficiency...in practically no time at all. Built and priced to make years of film developing cost effective, the Mini-Med is the perfect choice for hospitals, private practices, clinics and mobile installations. Special versions of this processor are available for those dedicated to mammographic film processing. The Mini-Med accepts all standard x-ray film sizes...from 4" x 4" (10 x 10cm) to as large as 14" x 36" (36 x 92cm)...and the Mini-Med 90 can process 90 14" x 17" (36 x 43cm) films per hour.

### Built-in quality control indicators

A visual ready indicator conveniently alerts operator after a minimal warm up period. After the last film is processed, the machine returns to an energy and water conserving standby mode. While in standby mode, a special 'jog' cycle is employed to guarantee consistent quality throughout the processing day. Separate indicator lights notify operator that solutions are kept at optimal levels and temperatures.

### Automatic Chemical Replenisher

An electronic sensing system replenishes solutions automatically, keeping all chemicals at peak operating efficiency.

### No Plumbing Necessary

An optional "no plumbing" kit allows the unit to function on self-contained water, making the Mini-Med ideal for mobile installations, and where regulations restrict effluent disposal or no water or drains exist.



### Automatic Wash Water Control

The Mini-Med minimizes the consumption of water by eliminating flow during standby mode. Approximately 2/3 liter of fresh water is added during each jog cycle to eliminate potential algae problems.

### Infrared Dryer

Energy efficient I.R. heat lamps dry each film quickly and quietly. A unique pivot-back dryer rack enables easy access to wash section and for service and cleaning.

### Space Saving Size

Our unique Uni-Body design requires only a minimum of precious darkroom space, measuring only 33" x 22" x 24" (83.8 x 55.9 x 61 cm) overall.\* Processed film exits from the front, allowing the unit to easily fit in corners or flush against walls.

### Reliable Efficiency

The Mini-Med drive system is the result of years of technological advances. Ultra-reliable and incredibly rugged, our new worm drive greatly reduces the load on the system and extends motor life.

### Easy to Use, Easy to Install

The Mini-Med runs on standard 110V(220V optional) electrical current and requires only a cold water line connection. It can be installed either inside or outside of the darkroom. The optional 'no plumbing' conversion kit can be used in conjunction with replenisher tanks to eliminate the need for running water and exterior drainage, ideal for mobile medical facilities. Fixer drainage hose fittings are compatible with most standard silver recovery units. The Mini-Med also includes replenisher storage tanks and connecting plumbing hoses.

\*For counter storage overall footprint measures just 21" x 22" (53.9 x 55.9cm)



Comes ready to set up, complete with 7-gallon tanks, connector hoses and starter parts kit all included. Shown with optional stand.

### Easy to maintain, backed by the industry's most comprehensive warranty

The simplicity of the Mini-Med carries right through to the easy-to-understand operating manual that accompanies every unit. Should warranty repair be necessary, the Mini-Med is backed by a comprehensive two-year parts warranty. Just contact a factory trained dealer service representative for prompt responsive service.

### Seeing is believing

We've told you why the Mini-Med is the world's most popular film processor (over 15,000 satisfied owners), but don't take our word for it, make the Mini-Med a part of your practice and see for yourself.



For more information call 678.987.8579, visit [www.AFPmanufacturing.com](http://www.AFPmanufacturing.com), or email us at [customerservice@AFPmfg.com](mailto:customerservice@AFPmfg.com). Once you see it in action you'll see why the Mini-Med is the biggest name in compact x-ray film processors.